



# ACCESSORIES CATALOGUE

## ROAD RANGER®



Samochody  
Użytkowe

# 40

years of market  
presence

# 12000

hardtops annually  
production

# 180

qualified employees

# 48

distributors around the  
world



## ROAD RANGER®

PremiumPartner

The Road Ranger brand was established in the 1970s. At that time, we were the first and only company in Europe manufacturing hardtops for pickups and camping hardtops for open-platform cars. Rather than manual lamination, the Resin Transfer Molding (RTM) light technology, i.e. vacuum moulding, is increasingly used in production.

The Road Ranger brand consists of a group of companies known as Dr. Höhn Group, which includes the following:

- Dr. Höhn GmbH based in Ingelfingen, Germany – sales to Western European markets;
- Dr Höhn Sp. z o.o. – factory manufacturing Road Ranger products located in Ostroda, Poland;
- MKT Car Technik Sp. z o.o. based in Ostroda, Poland – sales to other markets.

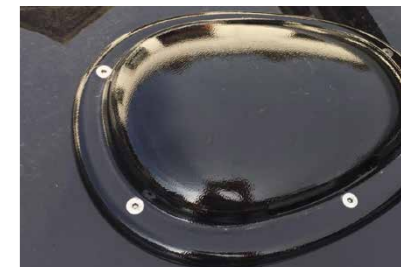


## EXTRAS AVAILABLE BY HARDTOP ORDERING:

- » Solid rear door (unglazed)
- » Sliding roof bars
- » ABS roof vent
- » LED workinglight
- » Roof reinforcement
- » Colour-matched side flaps



Sliding roof bars



ABS roof vent



LED workinglight



## HARDTOP VW DC RH04 IE FS2 N (PROFI+)

Premium Hardtop in Profi+ version, i.e. with side windows which open upwards (remote control opening).

**Features:** cab hight, glazed rear door (glass is seated in a thermoformed ABS frame), tinted rear door, heated rear screen, integrated spoiler, opening bulkhead window (air circulation, ability to wash the vehicle's window), carpet lining, automatic interior LED light, rear door lock integrated with the car's central lock system, color coded, complete mounting set.

Please note: the RH04 model in the Profi + version is available as the original Volkswagen hardtop. In order to receive the offer, please contact the authorized Volkswagen Commercial Vehicles dealer.

Art. 1901014



**HEATED GLAZED REAR DOOR  
(GLASS IS SEATED IN A THERMOFORMED  
ABS FRAME)**



**CHECK THE PRICE AT:**

[WWW.ROADRANGER.PL](http://WWW.ROADRANGER.PL)





## HARDTOP VW DC RH03 KO IE S (STANDARD)

Hardtop with a modern design in Standard version, i.e. with solid side panels on which the company's advertisement can be placed.

**Features:** cab hight, glazed rear door, tinted rear door, heated rear screen, integrated spoiler with the third brake light, opening bulkhead window (air circulation, ability to wash the vehicle's window), carpet lining, automatic interior LED light, rear door lock integrated with the car's central lock system, color coded, complete mounting set.

When installing on VW Amarok V6 3.0 (2016+), please order the additional electric set, ref. ET310126.

**CHECK THE PRICE AT:**

[WWW.ROADRANGER.PL](http://WWW.ROADRANGER.PL)

Art. 60201



## HARDTOP VW DC RH03 KO IE F (SPECIAL)

Hardtop with a modern design in Standard version, i.e. with pop-out side windows.

**Features:** cab hight, glazed rear door, tinted rear door, heated rear screen, integrated spoiler with the third brake light, opening bulkhead window (air circulation, ability to wash the vehicle's window), carpet lining, automatic interior LED light, rear door lock integrated with the car's central lock system, color coded, complete mounting set.

When installing on VW Amarok V6 3.0 (2016+), please order the additional electric set, ref. ET310126.

**CHECK THE PRICE AT:**

[WWW.ROADRANGER.PL](http://WWW.ROADRANGER.PL)

Art. 60211



## HARDTOP VW DC RH03 KO IE S2 (PROFI)

Hardtop with a modern design in Profi version, i.e. with opened up side flaps made of black ABS.

**Features:** cab high, glazed rear door, tinted rear door, heated rear screen, integrated spoiler with the third brake light, opening bulkhead window (air circulation, ability to wash the vehicle's window), carpet lining, automatic interior LED light, rear door lock integrated with the car's central lock system, color coded, complete mounting set.

When installing on VW Amarok V6 3.0 (2016+), please order the additional electric set, ref. ET310126.

**CHECK THE PRICE AT:**

[WWW.ROADRANGER.PL](http://WWW.ROADRANGER.PL)

Art. 60221



## HARDTOP VW DC RH01 4 IE F1 (SUNCAB SPECIAL)

Hardtop with a modern and sporty design equal in height to the vehicle's cab, with a "truncated" rear. Hardtop in Special version, i.e. with sliding side windows with a mosquito net.

**Features:** cab high, glazed rear door, tinted rear door, heated rear screen, third brake light, non-opening bulkhead window, tapicerka wewnętrzna, carpet lining, automatic interior LED light, rear door lock integrated with the car's central lock system, color coded, complete mounting set.

When installing on VW Amarok V6 3.0 (2016+), please order the additional electric set, ref. ET310126.

**CHECK THE PRICE AT:**

[WWW.ROADRANGER.PL](http://WWW.ROADRANGER.PL)

Art. 1901049



## HARDTOP VW DC BW S (RATIOTOP STANDARD)

Hardtop with basic wquipment, solid side panels and full rear door made of fiberglass, what ensures greater safety of the transported goods. It's the best solution for tenders.

**Features:** cab hight, solid bulkhead (no window), solid side panels, solid rear door opened up manually, interior LED light, wipe clean interior, third brake light, color coded, complete mounting set.

**CHECK THE PRICE AT:**

[WWW.ROADRANGER.PL](http://WWW.ROADRANGER.PL)

Art. 60230



## HARDTOP VW DC BP BA S (BACPAC STANDARD)

The BacPac hardtop is ideally tailored for those customers who require expanded loading space and want to make maximum use of the truck bed. All of this, due to the increased height of the hardtop, which is higher than the vehicle's cab. It is also an ideal choice for personalisation in tender contracts to keep an attractive price. Standard version, i.e. solid side panels.

**Features:** glazed rear door, non-opening bulkhead window, interior LED light, carpet lining, color coded, complete mounting set.

**CHECK THE PRICE AT:**

[WWW.ROADRANGER.PL](http://WWW.ROADRANGER.PL)

Art. 60130



## HARDTOP VW DC BP BA F (BACPAC SPECIAL)

The BacPac hardtop is ideally tailored for those customers who require expanded loading space and want to make maximum use of the truck bed. All of this, due to the increased height of the hardtop, which is higher than the vehicle's cab. It is also an ideal choice for personalisation in tender contracts to keep an attractive price. Special version, i.e. sliding side windows with a mosquito net.

**Features:** glazed rear door, non-opening bulkhead window, interior LED light, carpet lining, color coded, complete mounting set.

**CHECK THE PRICE AT:**

[WWW.ROADRANGER.PL](http://WWW.ROADRANGER.PL)

Art. 60140



## HARDTOP VW DC BP BA S2 (BACPAC PROFI)

The BacPac 4 hardtop is ideally tailored for those customers who require expanded loading space and want to make maximum use of the truck bed. All of this, due to the increased height of the hardtop, which is higher than the vehicle's cab. It is also an ideal choice for personalisation in tender contracts to keep an attractive price. Profi version, i.e. side flaps in an aluminium frame, lifted up manually, made of laminate and color coded.

**Features:** glazed rear door, non-opening bulkhead window, interior LED light, carpet lining, color coded, complete mounting set.

**CHECK THE PRICE AT:**

[WWW.ROADRANGER.PL](http://WWW.ROADRANGER.PL)

Art. 60150



## HARDTOP VW SC BP BA BT S (SC BACPAC STANDARD)

Functionality with maximum space advantage.

Hardtop of proven design for everyday use. Ideally tailored for those customers who require expanded loading space and want to make maximum use of the truck bed. Standard version, i.e. with solid side panels.

Specyfikacja:

**Features:** glazed rear door, fixed front window, LED interior light, easily washable interior surface (no carpet), third brake light, color coded, complete mounting set.

**CHECK THE PRICE AT:**

[WWW.ROADRANGER.PL](http://WWW.ROADRANGER.PL)

Art. 62100



## HARDTOP VW SC BP BA BT FS2 (SC BACPAC SPECIAL+)

Functionality with maximum space advantage.

Hardtop of proven design for everyday use. Ideally tailored for those customers who require expanded loading space and want to make maximum use of the truck bed. Special version, i.e. with lockable tinted side glass flaps.

**Features:** glazed rear door, fixed front window, LED interior light, easily washable interior surface (no carpet), third brake light, color coded, complete mounting set.

**CHECK THE PRICE AT:**

[WWW.ROADRANGER.PL](http://WWW.ROADRANGER.PL)

Art. 1900777



## HARDTOP VW SC BP BA BT S2 (SC BACPAC PROFI)

Functionality with maximum space advantage.

Hardtop of proven design for everyday use. Ideally tailored for those customers who require expanded loading space and want to make maximum use of the truck bed. Profi version, i.e. with lockable framed fibreglass side flaps.

**Features:** glazed rear door, fixed front window, LED interior light, easily washable interior surface (no carpet), third brake light, color coded, complete mounting set.

**CHECK THE PRICE AT:**

[WWW.ROADRANGER.PL](http://WWW.ROADRANGER.PL)

Art. 62120





## HARDTOP L-TOP

Hard tonneau cover that will change the look of your Amarok. The tonneau fits the DC (Double Cab) version and has styling elements on the left- and right-hand side.

**Features:** fixed bulkhead window, third brake light, whigh-opening, LED interior light, easy and quick installation with clamps, central button-like handle, lockable, interior carpet on static elements, color coded, complete mounting set.

CHECK THE PRICE AT:

[WWW.ROADRANGER.PL](http://WWW.ROADRANGER.PL)

Art. 1900717



## SPORTCOVER I

High-quality hard tonneau cover made of ABS and colour-matched to the body, adjusted to the Double Cab (DC) truck bed. Our covers are characterised by quick and non-invasive installation and can be unfastened from the mounting rack thanks to the Fast Remove hinging system. The cover is raised up in its rear part to approx. 45 degrees and lockable.

Tonneau for vehicle without styling bar.

CHECK THE PRICE AT:

[WWW.ROADRANGER.PL](http://WWW.ROADRANGER.PL)

Art. 6000101





## SPORTCOVER II (COMPATIBLE WITH OE STYLING BAR)

High-quality hard tonneau cover made of ABS and colour-matched to the body, adjusted to the Double Cab (DC) truck bed. Our covers are characterised by quick and non-invasive installation and can be unfastened from the mounting rack thanks to the Fast Remove hinging system. The cover is raised up in its rear part to approx. 45 degrees and lockable.

Tonneau for vehicle with OE VW Stylingbar (short version).

Art. 6000201

CHECK THE PRICE AT:

[WWW.ROADRANGER.PL](http://WWW.ROADRANGER.PL)





## SPORTCOVER III (Z WITH STYLING BAR)

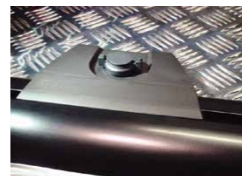
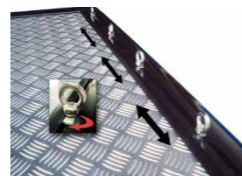
High-quality hard tonneau cover made of ABS and colour-matched to the body, adjusted to the Double Cab (DC) truck bed. The cover comes complete with stainless steel styling bar that can be painted as an option. Our covers are characterised by quick and non-invasive installation and can be unfastened from the mounting rack thanks to the Fast Remove hinging system. The cover is raised up in its rear part to approx. 45 degrees and lockable.

CHECK THE PRICE AT:

[WWW.ROADRANGER.PL](http://WWW.ROADRANGER.PL)

Art. 6000501





## ALUCOVER DC SILVER

Made of aluminium chequer plate.

- Weight: 35-45 kg.
- Maximum load 100 kg.
- Non-invasive installation within one hour.
- Hinge system that allows the cover to be removed within a few minutes.
- Patented water drain system.

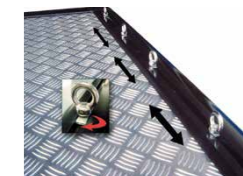
### Available accessories:

- Roll bars silver, mounted to the cover (raised together with it)
- Roll bars black, mounted to the cover (raised together with it)
- set of crossbars (2 pcs)
- automotive clips (6 szt.)

Art. EVO400

CHECK THE PRICE AT:

[WWW.ROADRANGER.PL](http://WWW.ROADRANGER.PL)



## ALUCOVER DC BLACK

Made of aluminium chequer plate, black painted.

- Weight: 35-45 kg.
- Maximum load 100 kg.
- Non-invasive installation within one hour.
- Hinge system that allows the cover to be removed within a few minutes.
- Patented water drain system.

### Available accessories:

- Roll bars silver, mounted to the cover (raised together with it)
- Roll bars black, mounted to the cover (raised together with it)
- set of crossbars (2 pcs)
- automotive clips (6 szt.)

Art. EVO400B

CHECK THE PRICE AT:

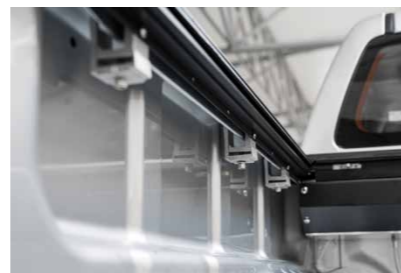
[WWW.ROADRANGER.PL](http://WWW.ROADRANGER.PL)



## ROLL COVER

Lockable waterproof aluminium roll cover with black vinyl coating. In addition to the visual effect, vinyl prevents dirt from getting between panels which thus prevents incorrect operation. The roll cover is a convenient way to cover the truck bed. If opened, it enables the transporting of high loads. When opening, the cover retracts in the case located against the front wall of the truck bed. In the closed position, the vehicle's rear door is also locked. Installed with clamps to the truck bed edges.

Roll cover for a vehicle without styling bar.



CHECK THE PRICE AT:

[WWW.ROADRANGER.PL](http://WWW.ROADRANGER.PL)

Art. 6000102



## ROLL COVER OE STYLING BAR SHORT

Lockable waterproof aluminium roll cover with black vinyl coating. In addition to the visual effect, vinyl prevents dirt from getting between panels which thus prevents incorrect operation. The roll cover is a convenient way to cover the truck bed. If opened, it enables the transporting of high loads. When opening, the cover retracts in the case located against the front wall of the truck bed. In the closed position, the vehicle's rear door is also locked. Installed with clamps to the truck bed edges.

Roll cover for a vehicle with VW OE short roll bars.

CHECK THE PRICE AT:

[WWW.ROADRANGER.PL](http://WWW.ROADRANGER.PL)

Art. 6000122



## ROLL COVER OE STYLING BAR LONG

Lockable waterproof aluminium roll cover with black vinyl coating. In addition to the visual effect, vinyl prevents dirt from getting between panels which thus prevents incorrect operation. The roll cover is a convenient way to cover the truck bed. If opened, it enables the transporting of high loads. When opening, the cover retracts in the case located against the front wall of the truck bed. In the closed position, the vehicle's rear door is also locked. Installed with clamps to the truck bed edges.

Roll cover for a vehicle with VW OE short roll bars (Black Label version, former Canyon).

CHECK THE PRICE AT:

[WWW.ROADRANGER.PL](http://WWW.ROADRANGER.PL)

Art. 6000132



## CARGO MANAGER

Cargo Manager is the organizer of the truckbed of your pickup truck. It's great solution for transporting any cargo, dividing truckbed into two parts. Thanks installation to longitudinal rails, its position can be set at any point. The partition itself can also be set in a parallel position to the floor, and if necessary you can dismantle it without any problem.

Please note, the Cargo Manager can only be installed with roll covers.

CHECK THE PRICE AT:

[WWW.ROADRANGER.PL](http://WWW.ROADRANGER.PL)

Art. 6000112



## ROLL COVER AVENTURA WITH SPORTSBAR SILVER

Lockable waterproof aluminium roll cover. The roll cover is a convenient way to cover the truck bed. If opened, it enables the transporting of high loads. When opening, the cover retracts in the case located against the front wall of the truck bed. In the closed position, the vehicle's rear door is also locked. Installed with clamps to the truck bed edges.

Roll cover for VW Amarok Aventura with Sportsbar.

Color: silver

CHECK THE PRICE AT:

[WWW.ROADRANGER.PL](http://WWW.ROADRANGER.PL)

Art. H718



## ROLL COVER AVENTURA WITH SPORTSBAR BLACK

Lockable waterproof aluminium roll cover. The roll cover is a convenient way to cover the truck bed. If opened, it enables the transporting of high loads. When opening, the cover retracts in the case located against the front wall of the truck bed. In the closed position, the vehicle's rear door is also locked. Installed with clamps to the truck bed edges.

Roll cover for VW Amarok Aventura with Sportsbar.

Color: black

CHECK THE PRICE AT:

[WWW.ROADRANGER.PL](http://WWW.ROADRANGER.PL)

Art. H718-1



## SLIDING TRAY

The optimum combination of quick access with load securing possibilities according to EU directives and VDI standards (DIN 75410-compliant).

Up to 500 kg maximum load in the driving (non-extended) position, in full extension up to 250 kg.

The design allows the optimum use of the truck bed.

A resistant waterproof plywood plate with a non-slip surface, frames seated on bearings, black powder-coated zinc-plated protective rails, 5-degree braking system, mounted to the truck bed floor.

**CHECK THE PRICE AT:**

[WWW.ROADRANGER.PL](http://WWW.ROADRANGER.PL)

Art. 6000316



## BEDLINER DC - UNDERRAIL VW

Perfect protection for the truck bed. Impact-, acid-, oil- and salt-resistant bedliner with rear door protection. The underrail version which allows the installation of a hardtop, cover, roll cover or styling roll bars.

Illustrative photo

**CHECK THE PRICE AT:**

[WWW.ROADRANGER.PL](http://WWW.ROADRANGER.PL)

Art. 400095



## BUSINESS-HOLD FLOOR RAIL SYSTEM

This multifunctional tie-down system of vibration-resistant aluminium rails ensures that cargo is safely fastened to the pickup truck bed. Load capacity equal to max. pulling load of 300 to 400 kg. Accessories from the Road Ranger offer can be easily mounted.

The system consists of: 2 rails, 4 automotive clips.

CHECK THE PRICE AT:

[WWW.ROADRANGER.PL](http://WWW.ROADRANGER.PL)

Art. 6000309



## BUSINESS-HOLD SIDE RAIL SYSTEM

This multifunctional tie-down system of vibration-resistant aluminium rails ensures that cargo is safely fastened to the pickup.

The system consists of: 2 rails, 4 automotive clips.

CHECK THE PRICE AT:

[WWW.ROADRANGER.PL](http://WWW.ROADRANGER.PL)

Art. 6000310





## WEAPONS DRAWER

Lockable drawer for weapons, with a foam bottom, lid and inserts.

**Dimensions:** 1200 mm x 350 mm

CHECK THE PRICE AT:

[WWW.ROADRANGER.PL](http://WWW.ROADRANGER.PL)

Art. W502121



## TRANSPORT TUB

A venison transport and general-purpose plastic tub, very robust.

Provided with comfortable handles for it to be easily pulled onto the truck bed.

Max. carrying capacity: up to 80 kg

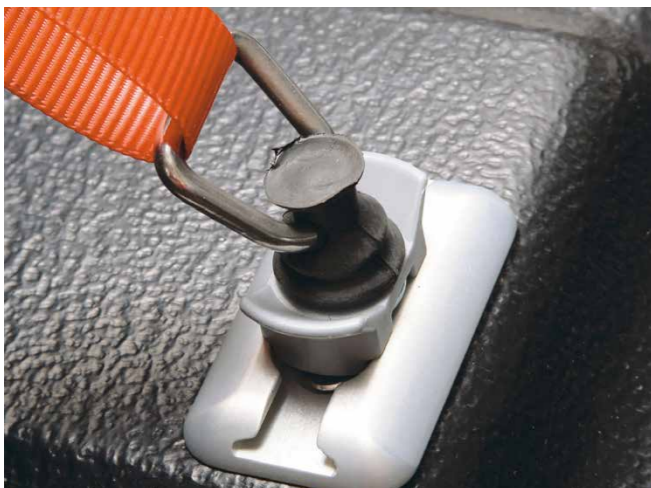
**Dimensions:** 910 x 600 x 200 mm

Heavy loads can be pulled in using the Multiramp (Art.-No. 240015) or Aluminium ramp (R007).

CHECK THE PRICE AT:

[WWW.ROADRANGER.PL](http://WWW.ROADRANGER.PL)

Art. 790019



## AUTOMOTIVE CLIP

Quick fitting of Automotive Clip system, including two mounting plates and two lashing eyes.

CHECK THE PRICE AT:

[WWW.ROADRANGER.PL](http://WWW.ROADRANGER.PL)

Art. 77149



## LASHING EYES

Lashing eyes with plastic retaining element (2 pcs).

CHECK THE PRICE AT:

[WWW.ROADRANGER.PL](http://WWW.ROADRANGER.PL)

Art. 78150



## DOG PROTECT - DOG CAGE

3-part dog cage made of black powder-coated steel. Mounted in the hardtop, it allows for the comfortable and safe transport of animals. The cage consists of elements that can be freely adjusted to the size of your animal to ensure optimum safety.



CHECK THE PRICE AT:

[WWW.ROADRANGER.PL](http://WWW.ROADRANGER.PL)

Art. 6000308



## DOG RAMP

A practical ramp for small and large animals with anti-slip surface.  
Light-weight (5.8kg) and resistant (180kg).  
The ramp extends to approx. 184cm.



CHECK THE PRICE AT:

[WWW.ROADRANGER.PL](http://WWW.ROADRANGER.PL)

Art. R008



## ALUMINIUM RAMP

Aluminium access ramp – 28 cm wide, 215 cm long, 115 cm when folded, only 7.5 kg in weight, capacity up to 250 kg.  
A loading ramp for pickups, vans, trailers and more. Ideal for loading a motorcycle, quad, heavy equipment, etc.



CHECK THE PRICE AT:

[WWW.ROADRANGER.PL](http://WWW.ROADRANGER.PL)

Art. R007



## MULTIRAMP

A multifunctional access ramp to protect the extended load when the tailgate is open.

System designed for all types of pickups. Three functions in one product:

- truck bed extension,
- access ramp,
- loading ramp.

Max. load capacity 320 kg, light weight (aluminium), easy assembly thanks to the included strap system.

In combination with our **lighting kit (Art.-No. 240016)**, this system meets the requirements of the road traffic regulations. Lamp holder for your multiramp. Connected to the 13-pole electrical kit.

Art. 240015



CHECK THE PRICE AT:

[WWW.ROADRANGER.PL](http://WWW.ROADRANGER.PL)



## FLIPT CARGO SPACE ORGANIZER

Brilliant in its simplicity, the flipt is a truck bed organiser for your pickup. Thanks to the adjustable width, it fits most pickup models. It is an ideal complement to each hardtop. After installation, it divides the truck bed into two parts to prevent the carried load from sliding. The flipt also protects the extended loads when driving with the rear door open. In addition, it can be used as a table or chair. The structure can withstand a maximum load of 100 kg.

The flipt is mounted to the brackets which should be riveted to the left and right-hand side of the truck bed using pre-drilled small holes of 5 mm.

The flipt is made from an oval powder-coated aluminium section. The brackets and fasteners are made of UV-resistant polypropylene.

Product weight: 5 kg

Art. H895-2 (black), H895 (orange)



CHECK THE PRICE AT:

[WWW.ROADRANGER.PL](http://WWW.ROADRANGER.PL)



## LIFT-UP + 40 MM (1.5/8 INCH)

The set fits the double-cab and single-cab version.

### Advantages:

front axle: Original shock absorber can be maintained. The driving comfort remains unchanged.  
rear axle: extended shock absorber

The commercially available package includes a suspension kit, mounting material, installation guide, TÜV certificate.  
Installation time: approx. 5 h.

Art. FW0024

CHECK THE PRICE AT:

[WWW.ROADRANGER.PL](http://WWW.ROADRANGER.PL)



## SET OF SKID PLATES ALU 4.0 MM VW AMAROK

Set of skid plates for VW Amarok V6 3.0.

Skid plates made of high-quality aluminium, 4 mm thick, perfectly shaped and mounted to the original points on the vehicle. The set consists of following skid plates: engine block, gearbox and fuel tank.

Contains the necessary mounting elements and an installation guide.

Art. 23333.5847.RR

CHECK THE PRICE AT:

[WWW.ROADRANGER.PL](http://WWW.ROADRANGER.PL)



## ENGINE AND GEARBOX SKID PLATE VW CADDY IV

Engine and gearbox skid plate made of steel, painted in black color.  
Thickness: 2 mm

Perfectly shaped and mounted to the original points on the vehicle

Contains the necessary mounting elements and an installation guide.

Art. 2111.5107.1

CHECK THE PRICE AT:

[WWW.ROADRANGER.PL](http://WWW.ROADRANGER.PL)



## ENGINE AND GEARBOX SKID PLATE VW T5/T6

Engine and gearbox skid plate made of steel, painted in black color.  
Thicknes: 2 mm  
Perfectly shaped and mounted to the original points on the vehicle

Contains the necessary mounting elements and an installation guide.

CHECK THE PRICE AT:

[WWW.ROADRANGER.PL](http://WWW.ROADRANGER.PL)

Art. 2111.5806.1



## ENGINE AND GEARBOX SKID PLATE VW CRAFTER

Engine and gearbox skid plate made of steel, painted in black color.  
Thicknes: 2 mm  
Perfectly shaped and mounted to the original points on the vehicle

Contains the necessary mounting elements and an installation guide.

CHECK THE PRICE AT:

[WWW.ROADRANGER.PL](http://WWW.ROADRANGER.PL)

Art. 2111.5858.1



## WATER CANISTER, 20L

Ideal wherever there is no access to running water. It is equipped with an additional 12V electric pump. The canister is often used by hunters and dog owners.  
The container is made of solid plastic.



CHECK THE PRICE AT:

[WWW.ROADRANGER.PL](http://WWW.ROADRANGER.PL)

Art. 21004



## UNIVERSAL TOOLBOX

A lockable toolbox made of impact- and weather-resistant plastic, with functional equipment and a universal mounting kit.

CHECK THE PRICE AT:

[WWW.ROADRANGER.PL](http://WWW.ROADRANGER.PL)

Art. SB80025



## BARS AMAROK V6

Ask the consultant for a full offer.



## CADDY 2015+

CHECK THE PRICE AT:

[WWW.ROADRANGER.PL](http://WWW.ROADRANGER.PL)



## T6 2015+

**CHECK THE PRICE AT:**

**WWW.ROADRANGER.PL**

# ROAD RANGER®

## MKT CAR-TECHNIK

Spokojna 5 Street  
14-100 Ostróda  
Poland  
Phone: 48 89 646 13 23

[info@roadranger.pl](mailto:info@roadranger.pl)  
[www.roadranger.pl](http://www.roadranger.pl)

---

Dealer:

We reserve the right to changes. Product images are for illustrative purposes only and may differ from the actual product.

